

Document Technical specification
Reference No. DC600/PRO
Revision 0
Date 16-JUN-2021
Author AK



Custom design technical specification 30kW at 50V DC load bank

Ratings

Voltage, V	50
Frequency, Hz	DC
Current range, A	0.6 to 600
Total capacity, kW	30

Operating environment

Service condition	Indoor use
Ambient temperature	-10°C to 50°C
Humidity	95% RH
Ingress protection	IP20 Load enclosure

Control and ventilation

Manual controls	System and trim section on/off pushbuttons, trim section adjustment knob, emergency stop
Control interface	7" touch screen display
Cooling	Forced convection, vertical orientation (horizontal exhaust)
Fan(s)	4 x DC fans, axial type
Control supply	230V AC 1-phase 50Hz
Source	External

Construction

Resistor elements	Expanded mesh and tape wound cards
Element material	Stainless steel
Enclosure	Dual layer; galvanized sheet steel, painted RAL9002 grey
Manoeuvrability	4 x castors wheels

Connection interfaces

Load connections	2 x sockets (+ & -) 1 x stud type (PE)
Control supply	1 x C14 type (L+N+PE)
Data downloads	USB Type-A
Networking/remote	2 x RJ45 (data via Modbus TCP/IP) 1 x 2-pin aero type (remote power supply)

Weight and dimensions

Drawing reference	162191
Length, mm	703
Width, mm	396
Height, mm	832
Weight, kg	50

Safety

Electrical protection	Over current and short circuit fuse protection Over voltage protection (via control system)
Thermal protection	2 x Thermostats (load and control compartments) Fan supply status

Testing and standards

Every unit is subjected to routine testing before dispatch, including functional operation, electrical insulation testing and visual inspection.

Documentation

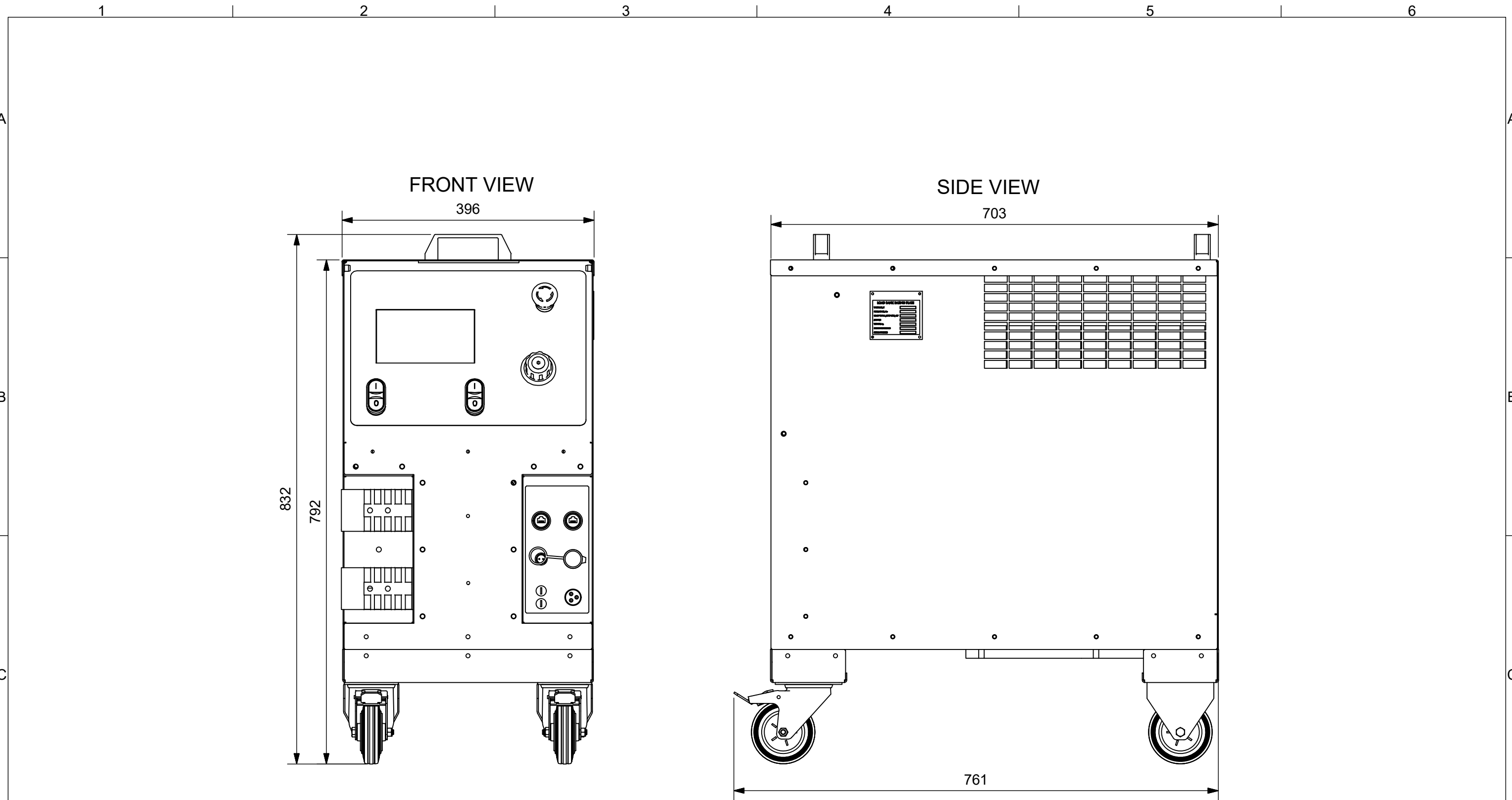
Supplied with an operation and maintenance manual and routine test report as standard.

Training and support

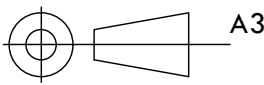
Training can be provided by the manufacturer at our headquarters or on-site, please contact our support team to find out more.

Warranty

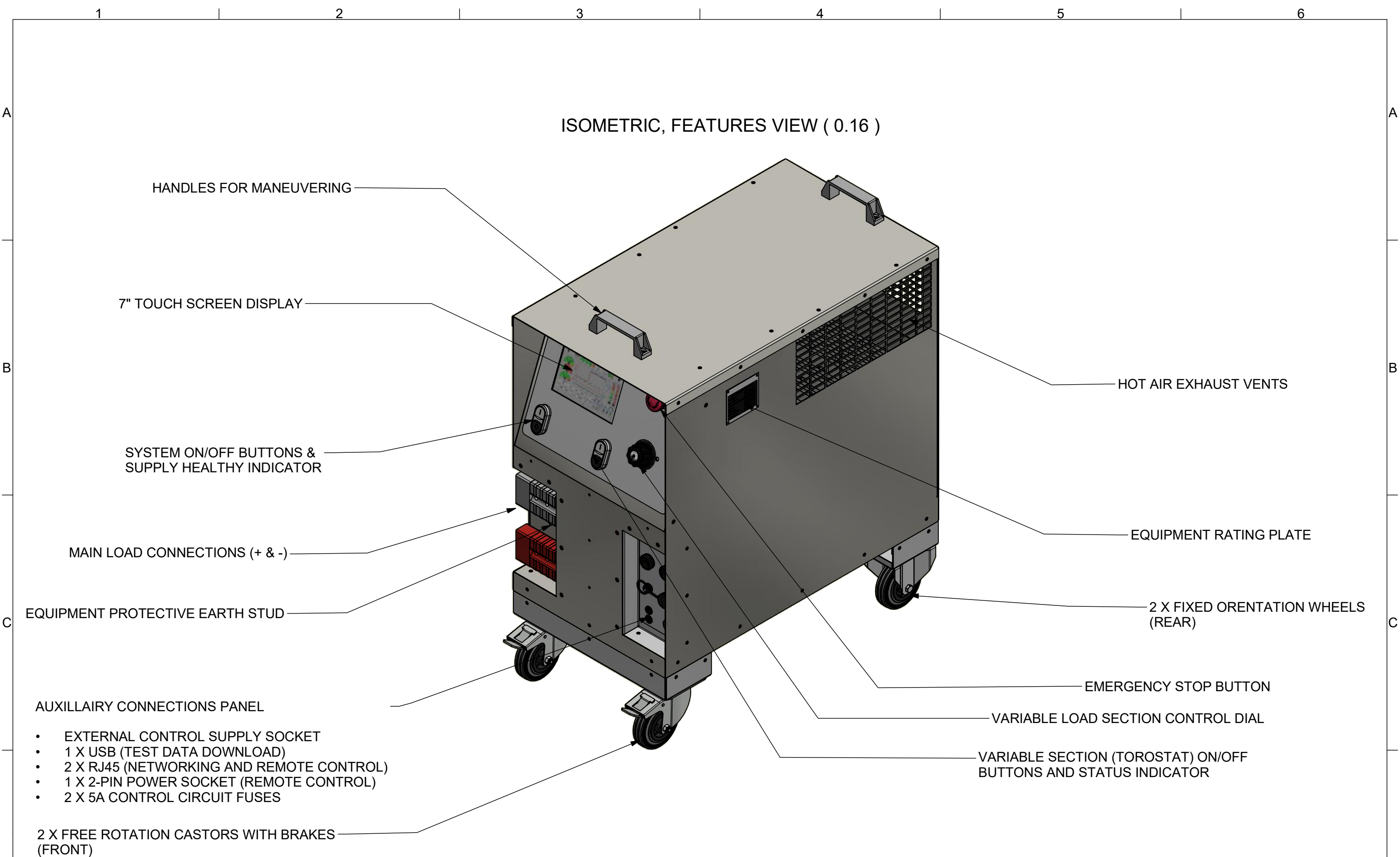
The equipment is covered by a 12-month warranty.



Power Prove
 a division of Cressall Resistors Ltd.
 Leicester, LE5 5LZ. UK.
 sales@powerprove.com
 © date of drawing

 A3
Tolerance
 +/- 5mm U.O.S.
Dimensions
 In mm U.O.S.

Drawing title DC600/PRO		Drawing No. 162191	Sheet 1 of 3	Issue A	Status Released
ECN No.	Change note (ECN) summary 1ST ISSUE.	Drawn by WH	Approved by AK	Date 24/02/2021	



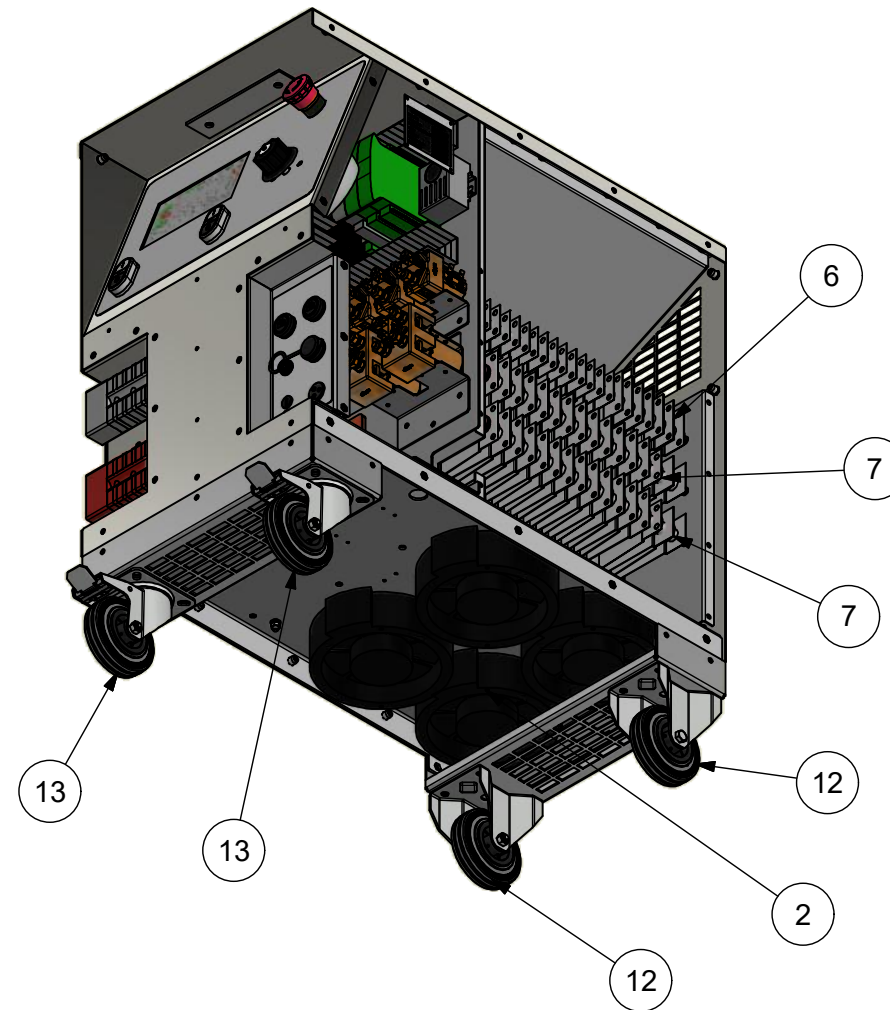
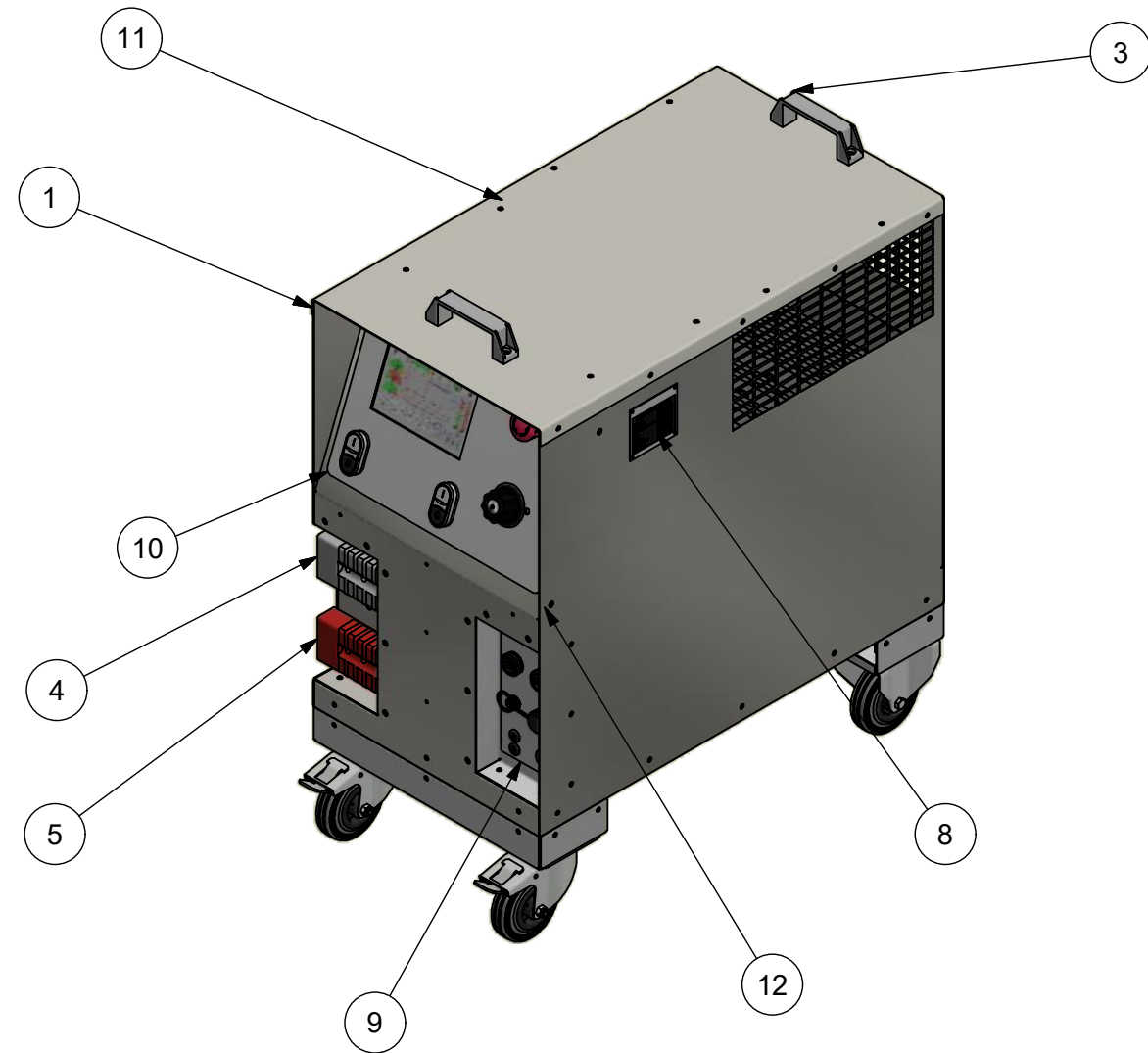
- AUXILLAIRY CONNECTIONS PANEL
- EXTERNAL CONTROL SUPPLY SOCKET
 - 1 X USB (TEST DATA DOWNLOAD)
 - 2 X RJ45 (NETWORKING AND REMOTE CONTROL)
 - 1 X 2-PIN POWER SOCKET (REMOTE CONTROL)
 - 2 X 5A CONTROL CIRCUIT FUSES

2 X FREE ROTATION CASTORS WITH BRAKES (FRONT)

POWER PROVE
 a division of Cressall Resistors Ltd.
 Leicester, LE5 5LZ. UK.
 sales@powerprove.com
 © date of drawing

A3
Tolerance
 +/- 5mm U.O.S.
Dimensions
 In mm U.O.S.

Drawing title DC600/PRO		Drawing No. 162191	Sheet 2 of 3	Issue A	Status Released
ECN No.	Change note (ECN) summary	Drawn by	Approved by	Date	
	1ST ISSUE.	WH	AK	24/02/2021	

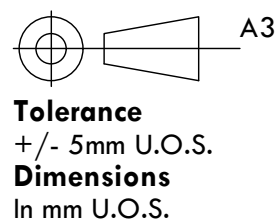


Parts List

ITEM	PART NUMBER	QTY	DESCRIPTION
1	BAE162136	1	DC600 PRO ENCLOSURE
2	1226634	4	AXIAL FAN 50V DC PAPST TYPE 6248N
3	90194	2	HANDLE (ELESA)
4	149210	1	PROCONNECT CONNECTOR SB350 (GREY)
5	149250	1	PROCONNECT CONNECTOR SB350 (RED)
6	BA97540	1	STRIP BANK (1) DC600
7	BA97539	2	STRIP BANK (2) DC600
8	162072 (161634)	1	POWER PROVE LOAD BANK RATING PLATE 82X76
9	BAF162211	1	CONNECTIONS KIT (CONTROL & DATA)
10	BAF162213	1	DIGILOAD INTERFACE PANEL
11	BAF162269	1	DC600/PRO CONTROL GEAR
12	162486	2	100mm FIXED CASTOR GREY RUBBER WHEEL
13	162485	2	100mm SWIVEL BRAKED CASTOR GREY RUBBER WHEEL



Power Prove
a division of Cressall Resistors Ltd.
Leicester, LE5 5LZ. UK.
sales@powerprove.com
© date of drawing



Drawing title
DC600/PRO

Drawing No.
162191

Sheet
3 of 3

Issue
A

Status
Released

ECN No. **Change note (ECN) summary**
1ST ISSUE.

Drawn by
WH

Approved by
AK

Date
24/02/2021