

Enclosure material

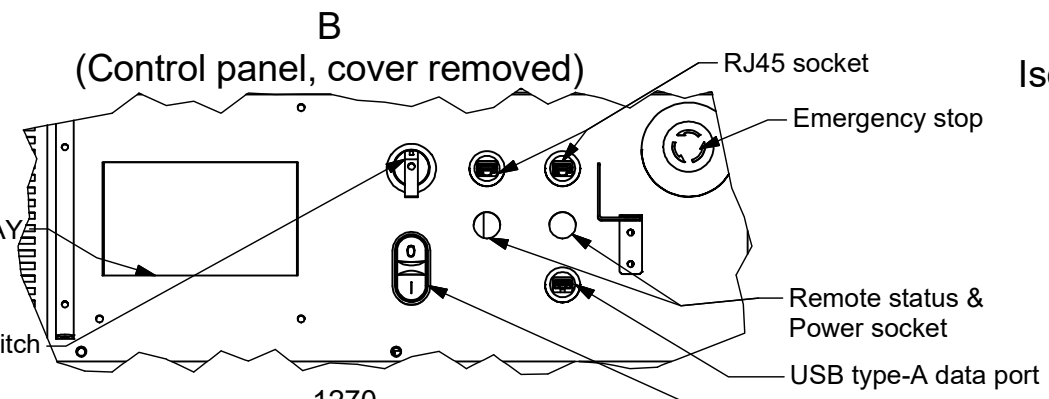
Frame 1.5mm thick galvanized mild steel
Finish Painted RAL 9002 grey

Degree of protection IEC 60529

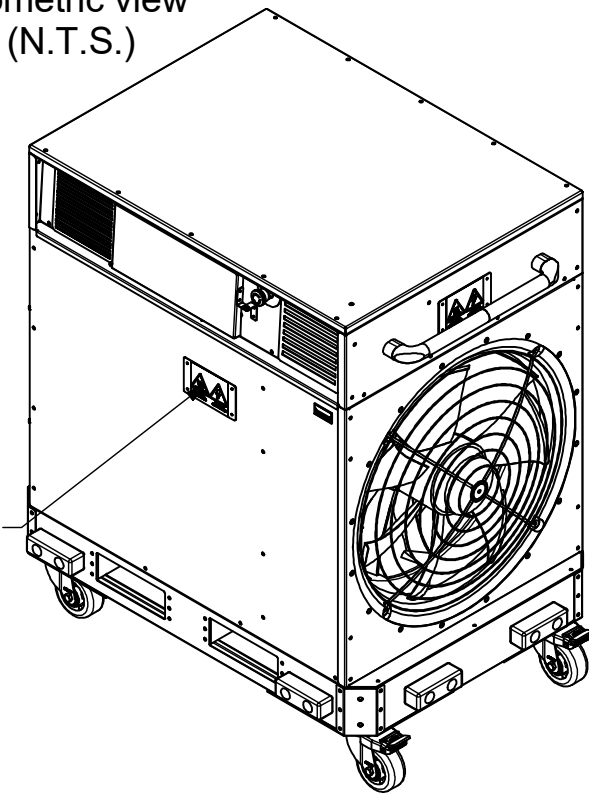
Load enclosure IP23
Control cabinet IP54

Dimensions

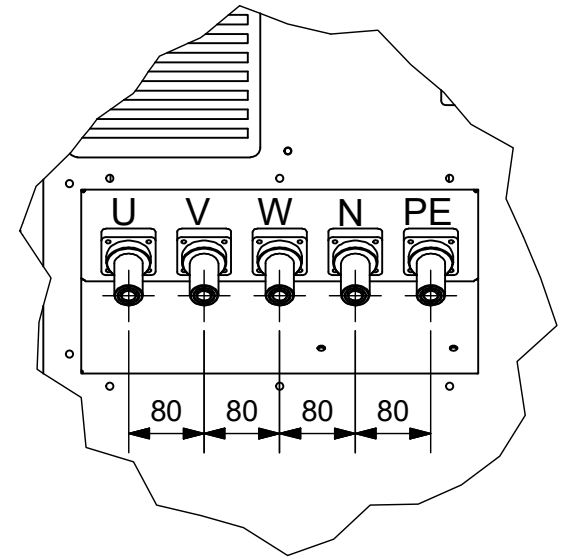
L x W x H as shown on drawing
Weight 240kg



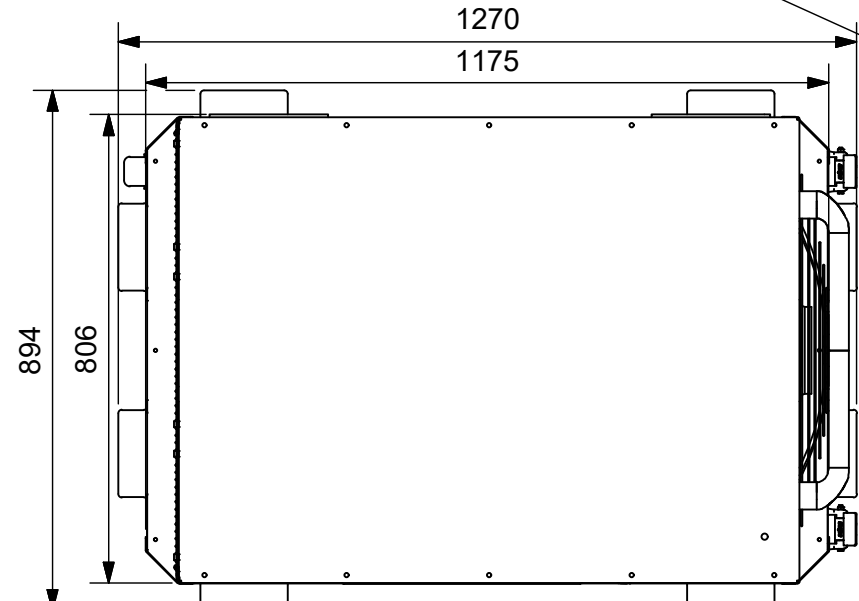
Isometric view (N.T.S.)



(Load connection detail) A

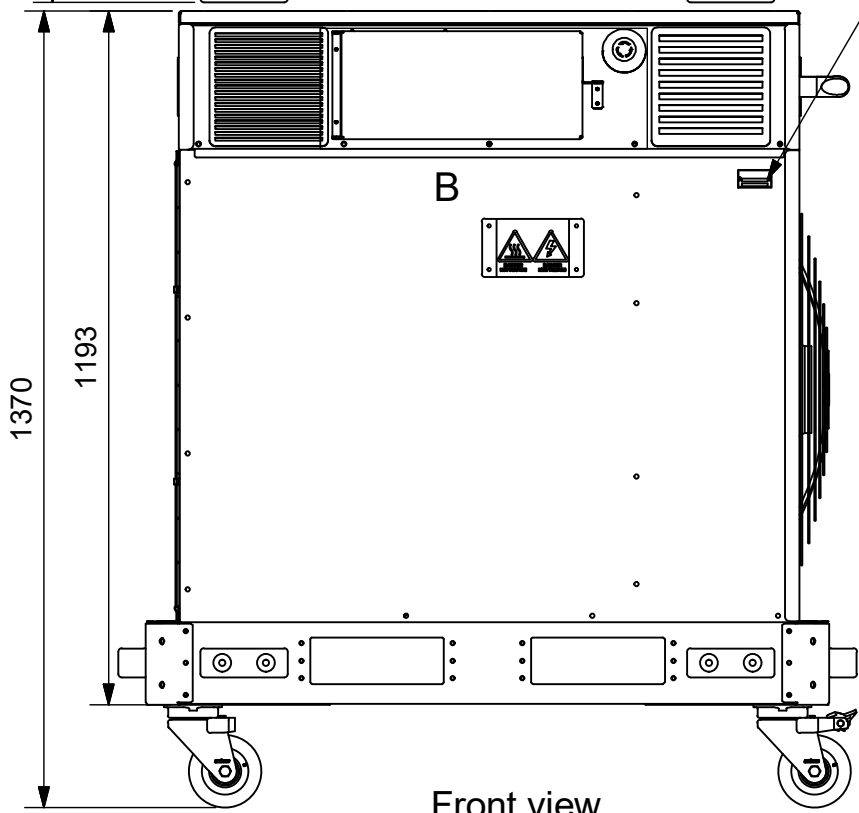


Top view

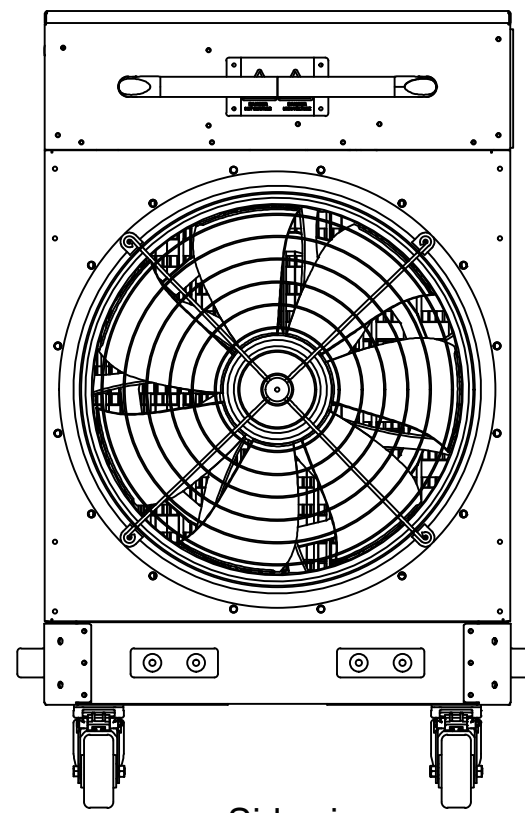


High voltage/temperature Warning label (English only, all 4 sides)

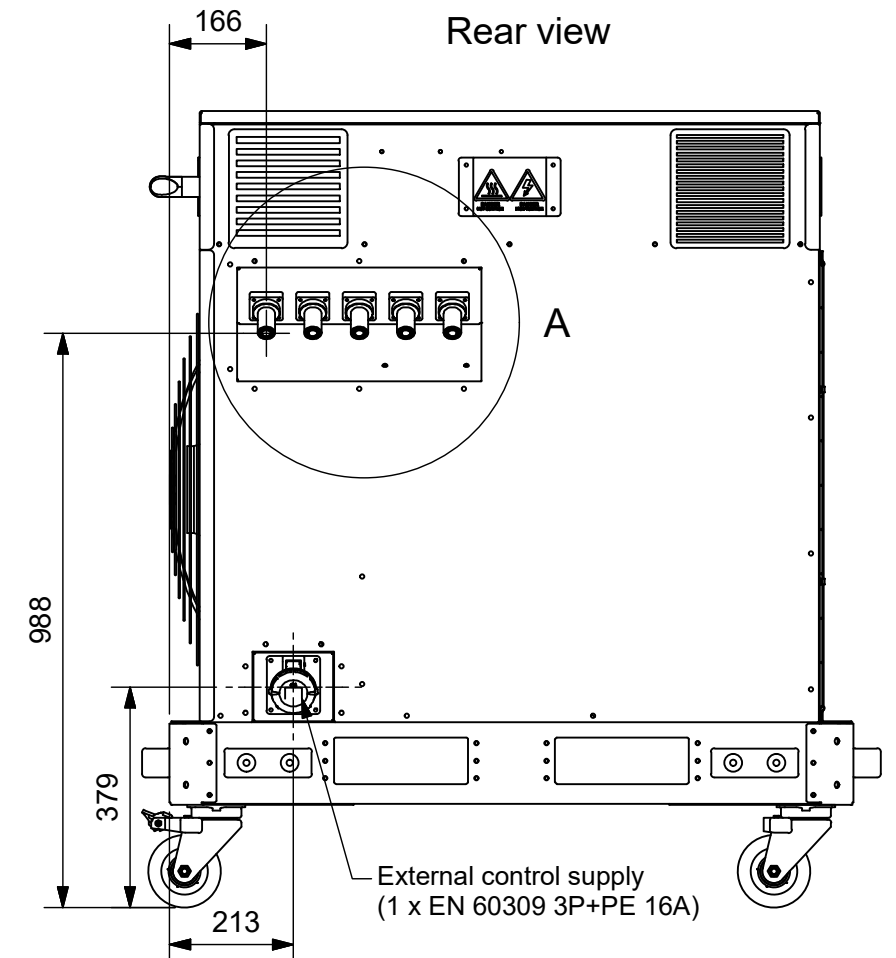
St. steel rating plate (English only)



Side view



Rear view



Power Prove
 a division of Cressall Resistors Ltd.
 Leicester, LE5 5LZ. UK.
 sales@powerprove.com
 © date of drawing

Units	mm (U.O.S.)
Projection	

Tolerance	± 5mm
Sheet size	A3

ECN No.	-	Change note description	1st issue.
Drawing title	AC200 Load bank general arrangement		

Drawn by	WH	Approved by	AK	Date	23/07/2021	Status	Released
Drawing No.	164043		Issue	A	Sheet	1 of 1	